



Simplicity is fast.  
Practice is faster.



2021-2022



**SIMPLICITY IS FAST.  
PRACTICE IS FASTER.**

Since 1994, BCA has been laser-focused on saving lives through reliable, easy-to-use products and consumer education. By keeping it simple when you're under stress, you increase your chances of a successful live recovery. But even the most intuitive device requires training and practice—including shovels.

In 2021, we're launching a brand new line of avalanche shovels: The Dozers, named after our original D-2 "Dozer"—the first shovel ever designed specifically for "strategic shoveling."\* These shovels are radically strong, light, and user-friendly. But the difference between a Dozer and another shovel is negligible compared to the difference between a random shoveler and a "strategic" shoveler. If you learn to chop and paddle, allocate manpower, and move the debris to all the right places, you're going to save valuable minutes—and potentially even a life.

There's a reason we're the best-selling backcountry brand in North America: simplicity. But that's only half the equation. The other half is up to you: learning and practicing.



\*See [www.backcountryaccess.com/learn](http://www.backcountryaccess.com/learn)

## TABLE OF CONTENTS

MtnPro Collection	3
Float Avalanche Airbags	5
Tracker Avalanche Transceivers	11
Tracker Packages	14
BC Link Group Communication	15
Stealth Avalanche Probes	17
Dozer Avalanche Shovels	19
Stash Packs	23
Snow Study Tools	26
Urban Backpacks	26
Educational Resources	27

## PRODUCTS

Dozer 1T
Dozer 1T-UL
Dozer 2T
Dozer 2D
Dozer 2H
Dozer 3D



# MTNPRO™ COLLECTION

## ARMOR UP.

Designed for high-performance mountain riding, the MtnPro lineup offers full protection to the chest, ribs, and back—now includes our Float 2.0 airbag system. Our MtnPro Tunnel Bag enhances safety and performance by accessibly storing those items you might need in an emergency, but that you don't need on your back.



## FLOAT MTNPRO VEST

Gearing up is easy with this all-in-one, lightweight breathable protective vest featuring built-in integration with transceiver and BC Link radio. Now available with compact, lightweight Float 2.0 inflation system. Integrated low profile pack carries avalanche gear and a few other essentials. Full front, side and back protection with 1 mm of hard shell sandwiched between two layers of PE foam. Oval "ergo" trigger is less likely to snag on trees than round or T-shaped handles. Cylinders are sold separately.

- Six percent lighter than previous Float MtnPro Vest models
- Mesh material and perforated armor for increased ventilation
- Three sizes available: S, M/L and XL/XXL
- Main compartment has internal tool pocket for shovel and probe
- External shovel carry pocket
- Shovel shaft quick lock attachment
- Zipper access for trigger/BC Link radio or hydration system
- Compression straps
- (Two) large gusseted front pockets
- Accessory pocket
- D-ring loop for attaching kill switch tether

Pack volume	915 cubic inches / 15 liters (S)
	1,220 cubic inches / 20 liters (M/L and XL/XXL)
Weight	7.3 lb / 3,333 g (S full system with full cylinder)
	8.1 lb / 3,652 g (M/L full system with full cylinder)
	8.3 lb / 3,770 g (XL/XXL full system with full cylinder)
	6.1 lb / 2,775 g (S full system without cylinder)
	6.9 lb / 3,094 g (M/L full system without cylinder)
	7.1 lb / 3,212 g (XL/XXL full system without cylinder)
	4.7 lb / 2,113 g (S vest/pack only)
	5.4 lb / 2,432 g (M/L vest/pack only)
	5.6 lb / 2,550 g (XL/XXL vest/pack only)
Sizes	S, M/L, XL/XXL
Torso Size	16.5" - 19.5" / 42 - 50 cm (S)
	17.5" - 20.5" / 44.4 - 52.1 cm (M/L)
	18.5" - 21.5" / 47 - 53.3 cm (XL/XXL)
Chest Size	32" - 40" / 81 - 102 cm (S)
	38" - 46" / 96.5 - 116.8 cm (M/L)
	46" - 54" / 116.8 - 137.2 cm (XL/XXL)
Colors	Black with neon yellow or red trim



## MTNPRO TUNNEL BAG

With the MtnPro Tunnel Bag, your extra shovel is accessible and secure—along with all your extra gear for an unexpected night out. This low profile tunnel bag features an exterior shovel carry, two (2) waterproof internal pockets, and multiple mounting options for most snowmobiles. Compatible with Polaris Lock and Ride system. (Linq and Lock and Ride not included. See your dealer) No drilling required for Ski-Doo Linq system or Polaris tunnels.

Bag Volume	1,321 cubic inches / 21 liters
Dimensions	15.5" x 15.5" x 5.5" / 39 cm x 39 cm x 14 cm
Weight	3.4 lb / 1,560 g
Zippers	YKK w/ DWR coating
Material	500 denier polyester w/ PU coating
Color	Black



# FLOAT™

## AVALANCHE AIRBAGS

### STAY AFLOAT.

The Float avalanche airbag system is tested and proven to reduce trauma and keep you on the surface during an avalanche. Our cylinder is now half the size of other compressed air systems and fits in the same compartment as the airbag itself—reducing weight and freeing up space in the main compartment.

The Float 2.0 system is not compatible with Float 1.0 cylinders (and vice versa). Patent: #7,878,141  
Cylinders are sold separately.



### FLOAT FEATURE CHART

	FLOAT 12	FLOAT 22	FLOAT 32	FLOAT 42	FLOAT 15 TURBO	FLOAT 25 TURBO	FLOAT MTNPRO VEST
BC Link Compatible	●	●	●	●	●	●	●
Hydration Compatible	●	●	●	●	●	●	●
Dual Zippered Shoulder Straps	●	●	●	●	●	●	●
Ergo Trigger	●	●	●	●	●	●	●
Molded Back Panel	●	●	●	●	●	●	●
Height-Adjustable Hip Belt	●	●	●	●	●	●	●
Hip Belt Pocket	●	●	●	●		●	
External Shovel Carry System					●	●	●
External Shovel Shaft Attachment Loop					●	●	●
External Shovel Shaft Side Carry Attachment					●	●	●
Internal Shovel/Probe Compartment		●	●	●		●	
Compression Straps			●	●	●	●	●
Helmet Carry - Removable	●	●	●	●			
BC Link Pocket w/ External Access					●	●	
Internal Support Frame			●	●		●	
Diagonal Ski Carry	●	●	●	●			
Vertical Snowboard Carry	●	●	●	●			
Load Lifters			●	●		●	
External Fleece-lined Goggle Pocket						●	
Internal Fleece-lined Goggle Sleeve			●	●	●		
Back Panel Access				●			

# FLOAT 15 TURBO

Our technical, low volume airbag pack designed for mountain sledding.

Pack Volume	915 cubic inches / 15 liters (with system)
Weight	6.0 lb / 2,756 g (full system with full cylinder)
	4.8 lb / 2,198 g (full system without cylinder)
	3.4 lb / 1,563 g (pack only)
Materials	330 denier mini ripstop nylon w/ PU coating (main)
	420 denier oxford nylon w/ PU coating (high wear areas)
	200 denier polyester (lining)
Zippers	YKK w/ DWR coating
Torso Size	17.5" - 19.5" / 44.4 - 49.5 cm
Color	Black/Red/Lime



New BC Link pocket w/ external access to base unit for recharging and channel programming.

# FLOAT 12

Our lowest volume, lowest profile Float pack for small-to-medium torso lengths.

Pack Volume	732 cubic inches / 12 liters (with system)
Weight	6.0 lb / 2,700 g (full system with full cylinder)
	4.7 lb / 2,142 g (full system without cylinder)
	3.3 lb / 1,480 g (pack only)
Materials	330 denier mini ripstop nylon w/ PU coating (main)
	420 denier oxford nylon w/ PU coating (high wear areas)
	200 denier polyester (lining)
Zippers	YKK w/ DWR coating
Torso Size	17.5" - 19.5" / 44.4 - 49.5 cm
Color	Black/Red



# FLOAT 25 TURBO

Our most technical airbag pack specifically for mountain sledding, with versatility and volume for big days.

Pack Volume	1,525 cubic inches / 25 liters (with system)
Weight	6.4 lb / 2,918 g (full system with full cylinder)
	5.2 lb / 2,360 g (full system without cylinder)
	3.7 lb / 1,698 g (pack only)
Materials	330 denier mini ripstop nylon w/ PU coating (main)
	420 denier oxford nylon w/ PU coating (high wear areas)
	200 denier polyester (lining)
Zippers	YKK w/ DWR coating
Torso Size	17.5" - 20.5" / 44.4 - 52.1 cm
Color	Grey/Black/Orange



New BC Link pocket w/ external access to base unit for recharging and channel programming.

# FLOAT 22

Our medium-sized Float pack for close-in backcountry riding.

Pack Volume	1,342 cubic inches / 22 liters (with system)
Weight	6.1 lb / 2,780 g (full system with full cylinder)
	4.9 lb / 2,222 g (full system without cylinder)
	3.4 lb / 1,560 g (pack only)
Materials	330 denier mini ripstop nylon w/ PU coating (main)
	420 denier oxford nylon w/ PU coating (high wear areas)
	200 denier polyester (lining)
Zippers	YKK w/ DWR coating
Torso Size	17" - 20" / 43.1 - 50.8 cm
Color	Black/Orange, Lime



# FLOAT 32

Our full-featured pack for dedicated boondockers carrying all the essentials.



Pack Volume	1,952 cubic inches / 32 liters (with system)
Weight	6.4 lb / 2,942 g (full system with full cylinder)
	5.2 lb / 2,366 g (full system without cylinder)
	3.8 lb / 1,704 g (pack only)
Materials	330 denier mini ripstop nylon w/ PU coating (main)
	420 denier oxford nylon w/ PU coating (high wear areas)
	200 denier polyester (lining)
Zippers	YKK w/ DWR coating
Torso Size	17.5" - 20.5" / 44.4 - 52.1 cm
Color	Black/Lime, Red

# FLOAT 42

For pros, guides, search-and-rescue teams, and those prepared for long days or overnights.



Pack Volume	2,563 cubic inches / 42 liters (with system)
Weight	7.1 lb / 3,215 g (full system with full cylinder)
	5.9 lb / 2,658 g (full system without cylinder)
	4.4 lb / 1,998 g (pack only)
Materials	210 denier mini ripstop nylon w/ PU coating (main)
	420 denier oxford nylon w/ PU coating (high wear areas)
	200 denier polyester (lining)
Zippers	YKK w/ DWR coating
Torso Size	18" - 21" / 45.7 - 53.3 cm
Color	Black/Red



# FLOAT 2.0 COMPRESSED AIR CYLINDER



The refillable Float compressed air cylinder is the power and driving force behind our Float system. When the Float trigger is pulled, it activates the release of 3,000 psi (207 bar) of compressed air, inflating the airbag. Always make sure your cylinder is full and connected correctly before heading out. Can be purchased full or empty. Only compatible with Float 2.0 systems. Sold separately. Weight full..... 1.2 lb / 558 g

# CONSUMER REFILL KIT



Additional kit. Comes standard with each Float cylinder purchase.

- Includes:
- 5/32 Allen wrench
  - Toothpick
  - 5 small O-rings
  - 2 valve-to-tank O-rings
  - High-vacuum grease

# REFILL CENTER STOCK KIT



- Includes:
- 100 small O-rings
  - 100 refill stickers
  - 10 valve-to-tank O-rings
  - Container of high-vacuum grease

# TRACKER™

## AVALANCHE TRANSCEIVERS

**SIMPLICITY IS FAST.  
PRACTICE IS FASTER.**

Saving lives is what we do best. We invented the digital multi-antenna avalanche transceiver, and now we're making them even more durable than ever before. Our Tracker avalanche transceivers are the most widely used in North America—with a reputation worldwide as the industry benchmark in ease-of-use and simplicity. Tracker4 upholds the Tracker tradition with an ergonomic, bombproof case and big new display for workhorses tough on their gear.

### TRACKER FEATURE CHART

	TRACKER4	TRACKER3+	TRACKER S
Three Antenna	●	●	●
Temperature Resistant LED Display	●	●	●
Multiple Burial Indicator	●	●	●
Close Proximity Indicator	●	●	●
Mute Mode	●	●	●
Auto Revert Mode	●	●	●
Big Picture Mode	●	●	●
Signal Suppression Mode	●	●	●
Motion-Sensing Auto Revert	●	●	
Updatable Software	●	●	

## TRACKER4 Upholding the Tracker tradition.

Tracker avalanche transceivers have long been the fastest, easiest-to-use beacons in the industry. T4 just took it up a notch, with a rubberized overmolded case, larger LED display, and the same Tracker interface that basically makes it impossible not to find your companion. Signal suppression and Big Picture modes for no-nonsense multiple-victim searching. Motion-sensing auto revert-to-transmit mode. USB-C port for downloadable software updates.

All transceivers include harness and batteries. U.S. patent numbers: 6,167,249 & 6,484,021, B

Weight	~ 7.6 oz / 215 g including batteries, not harness
Dimensions	~ 4.7" x 3.0" x 1.0" / 12 cm x 7.5 cm x 2.6 cm
Frequency	457 kHz
Power supply	Three AAA alkaline batteries
Warranty	5 years limited



# TRACKER3+

Tracker's legendary ease-of-use in a smaller package.

The Tracker3+ has Tracker's renowned ease of use and instantaneous real-time display. Designed to be "pocket friendly," T3+ is our smallest, thinnest Tracker.

Signal suppression and Big Picture modes for no-nonsense multiple-victim searching. Motion-sensing auto revert-to-transmit mode. Mini USB port for downloadable software updates.

All transceivers include harness and batteries. U.S. patent numbers: 6,167,249 & 6,484,021, B

Weight	7.6 oz / 215 g including batteries, not harness
Dimensions	4.6" x 2.8" x 0.9" / 11.6 cm x 7.1 cm x 2.3 cm
Frequency	457 kHz
Power supply	Three AAA alkaline batteries
Warranty	5 years limited



# TRACKER S

Our streamlined, more affordable version of Tracker3+.

All the performance of T3+ and T4, without the luxuries of motion-sensing and updatable software.

All transceivers include harness and batteries. U.S. patent numbers: 6,167,249 & 6,484,021, B

Weight	7.2 oz / 205 g including batteries, not harness
Dimensions	4.5" x 2.8" x 1.0" / 11.5 cm x 7.1 cm x 2.6 cm
Frequency	457 kHz
Power supply	Three AAA alkaline batteries
Warranty	5 years limited



# TRACKER PACKAGES

Bundling the essentials makes it a slam-dunk to gear up for your first trip in the backcountry.

## T4 RESCUE PACKAGE

Our most advanced rescue package.

Includes: Tracker4, Stealth 270 probe, 2020 B-1 EXT shovel.



## T3+ RESCUE PACKAGE

Our best-selling rescue package.

Includes: Tracker3+, Stealth 270 probe, 2020 B-1 EXT shovel.



## TS RESCUE PACKAGE

Make your dollars go farther, with our streamlined value package.

Includes: Tracker S, Stealth 270 probe, 2020 B-1 EXT shovel.





# BC Link™

## GROUP COMMUNICATION

### NEVER ALONE.

Maximize your line—and maximize your safety. Find separated friends, communicate plans, stick your line and share observations in real-time with the BC Link group communication system. The Smart Mic user interface is located at your fingertips: to change settings, no need to dig the radio from your pack. Battery lasts for several days without recharging, even in cold temps.

#### BC LINK FEATURE CHART

	Euro BC LINK 2.0	BC LINK 2.0	BC Link
Option for pre-set channel selections	●	●	●
Compatible with FRS/GMRS radios that operate on FRS bands		●	●
22 FRS and GMRS channels + 121 privacy codes		●	●
Compatible with all PMR446 European radios	●		
8 PMR446 channels + 38 privacy codes	●		
Waterproof to IP56 standards	●	●	●
0.5 Watt	●	●	●
1 Watt			●
2 Watt		●	



## BC LINK 2.0

More durable, more weather resistant, and more style. Smart Mic grill is impervious to packing with snow. On/off/channel selection dial switch is protected from inadvertent channel changing. Stylish industrial design!

- Durable cord/base unit connection
- New battery power percentage display
- New factory reset option on channel pre-sets
- Maximum battery life: up to 40 hours in standby mode
- Average battery life: 8 hours of normal use
- Integrated 2300 mAh lithium ion battery, plus charger
- 60 second return-to-standby mode saves airtime and battery power
- Base unit can be clipped to belt or stashed inside backpack

Smart Mic dimensions	3.5" x 2.1" x 1.5" / 9.0 cm x 5.4 cm x 4.0 cm
Base unit dimensions	6.3" x 2.2" x 1.4" / 16 cm x 5.6 cm x 3.5 cm
Weight	11.0 oz / 312 g
Usable range	Approx. 6 miles / 9.5 km line of sight *
Maximum range	Up to 40 miles / 64 km line of sight *
Color	Black
Smart Mic Includes:	Push-to-talk button
	Channel control
	Loudspeaker
	Battery indicator
	Earphone jack



## BC LINK

Our wildly popular, nearly hands-free group communication system designed specifically for backcountry recreation in cold temps. For use with all backpacks, optimized for BCA Float and Stash packs. Extra batteries sold separately. Camo available in North America only.

- Maximum battery life: up to 40 hours in standby mode
- Average battery life: 8 hours of normal use
- Rechargeable/removable 2200 mAh lithium ion battery, plus charger
- Base unit can be clipped to belt or stashed inside backpack

Smart Mic dimensions	3.3" x 1.8" x 1.0" / 8.0 cm x 4.5 cm x 4.0 cm
Base unit dimensions	6.0" x 2.5" x 2.0" / 15 cm x 6.0 cm x 5.0 cm
Weight	12.0 oz / 340 g
Usable range	Approx. 6 miles / 9.5 km line of sight *
Maximum range	Up to 32 miles / 51 km line of sight *
Color	Black, Camo
Smart Mic Includes:	Push-to-talk button
	Channel control
	Loudspeaker
	Battery indicator
	Earphone jack



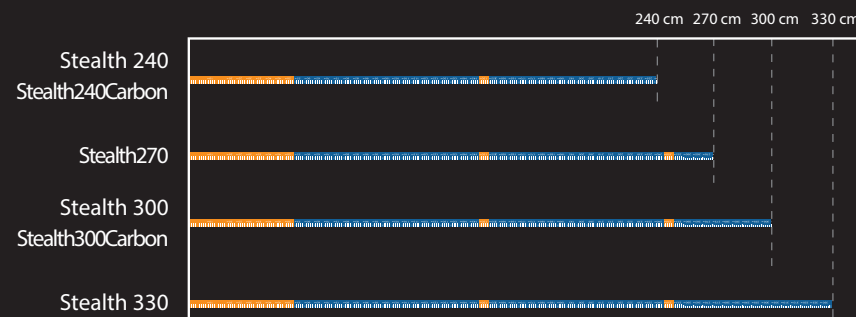
\*Camo color only available in North America

# STEALTH

## AVALANCHE PROBES

EVERY SECOND COUNTS.

BCA's updated probes feature dual-sized depth markings that are easy to see when you're performing a rescue or logging a snow profile. Pro-level aluminum models are laser-etched to prevent wear. Our Stealth Quick-Lock hardware creates a smaller bundle when folded up and eliminates loose cables that can whip you in the face when you're furiously probing.



Key depths are highlighted in orange: 1.5 m (for coarse probing), 2.5 m (for fine probing), and the bottom section (to alert shovelers that they're getting close).



BCA Stealth probes create a tight bundle when disassembled. Tapered joints enable fast reassembly.

Depth measurements are in two sizes: 5 cm increments on one side (for rescue) and 1 cm increments on the other side (for snow study).



### STEALTH 240

Compact, lightweight and economical.

Weight	8.8 oz / 250 g
Extended length	94" / 240 cm
Collapsed length	15.7" / 40 cm
Diameter	0.43" / 1.1 cm



### STEALTH 240 CARBON

The ideal minimalist and lightweight probe.

Weight	7.6 oz / 215 g
Extended length	94" / 240 cm
Collapsed length	15.7" / 40 cm
Diameter	0.43" / 1.1 cm



### STEALTH 270

Our mainstream probe for recreationists.

Weight	10.4 oz / 295 g
Extended length	106" / 270 cm
Collapsed length	17.7" / 45 cm
Diameter	0.47" / 1.2 cm



### STEALTH 300

Our go-to probe for professionals and advanced recreationists. Laser-etched depth markings. Shorter collapsed length now fits in more packs.

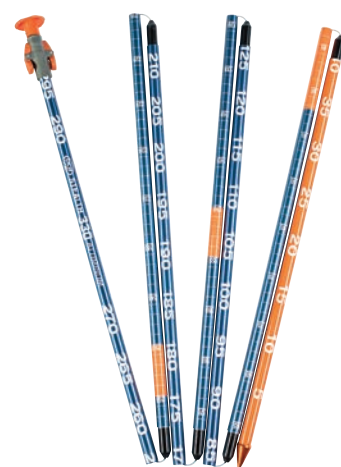
Weight	11.6 oz / 330 g
Extended length	118" / 300 cm
Collapsed length	17.0" / 43 cm
Diameter	0.47" / 1.2 cm



### STEALTH 300 CARBON

Long enough for deep snowpacks, but lighter than aluminum.

Weight	10.2 oz / 290 g
Extended length	118" / 300 cm
Collapsed length	17.0" / 43 cm
Diameter	0.51" / 1.3 cm



### STEALTH 330

Our longest, burliest probe for professionals and those traveling in deep snowpacks. Laser-etched depth markings.

Weight	12.3 oz / 350 g
Extended length	130" / 330 cm
Collapsed length	18.5" / 47 cm
Diameter	0.51" / 1.3 cm

# DOZER™ New

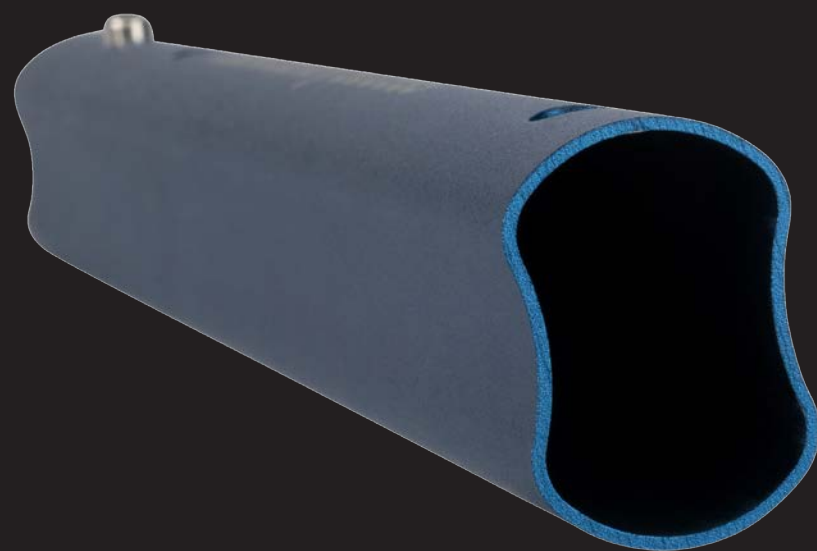
## SHOVELS

### DIG LIKE A MACHINE.

Our new ovo-concave shaft, low-profile stompable blades, and wide range of cored-out handles make BCA shovels stronger, lighter, and more packable than ever before.

This new line is inspired by our legendary D-2 EXT “Dozer” shovel. It’s so popular among our core followers, we’ve named our entire new line after it!

BCA was the first to create an avalanche shovel with a non-round shaft, to prevent breakage while prying. We’ve taken our groundbreaking oval design and added a concave radius on both sides, to make it even stronger, without adding weight. Tightly toleranced “variable offset” sliding surfaces between the inner and outer walls of the extendable shaft prevent ice buildup, for reliable deployment.



In hard-slab avalanches and deep burials, avalanche debris can be difficult to penetrate. With our flat “stomp edge” on the top of the blade—and heat-treated 6061 aluminum—you can penetrate just about anything by adding body weight. Auto-engaging spring pins at the blade/shaft connection make for faster, hands-free assembly/deployment.



BCA shovel blades lay flat in your pack with no protruding ferrule or “neck,” leaving more room for other backcountry essentials (and luxuries too!). The front third of all blades offers a smooth surface for clean snowpit walls during snow stability tests.



All BCA extendable models are designed to meet the UIAA standard for avalanche rescue shovels.

## DOZER 1T

Our most popular size: made for the masses.

The updated version of our former B-1 EXT, North America's best-selling avalanche shovel. T-grip handle. 6061 T6 aluminum.

Weight	1.2 lb / 545 g
Blade dimensions	9" x 10.5" / 23 cm x 27 cm
Handle & shaft compressed length	15.25" / 38.7 cm
Handle & shaft extended length	23.25" / 59 cm
Assembled compressed length	22.25" / 57 cm
Assembled extended length	30" / 76 cm
Colors	Blue, Green

## DOZER 1T-UL

Our lightest shovel, for the weight-conscious crowd.

Cored-out blade and thinner-walled 7075 T6 aluminum make this the lightest digging machine in our fleet. T-grip handle. 6061 T6 aluminum.

Weight	0.96 lb / 435 g
Blade dimensions	9" x 10.5" / 23 cm x 27 cm
Handle & shaft compressed length	15.25" / 38.7 cm
Handle & shaft extended length	23.25" / 59 cm
Assembled compressed length	22.25" / 57 cm
Assembled extended length	30" / 76 cm

## DOZER 2T

Our mid-sized shovel for pros and advanced recreationists.

Larger blade and longer extended length than the 1T. For those as serious about digging and snow safety as we are. T-grip handle. 6061 T6 aluminum.

Weight	1.5 lb / 680 g
Blade dimensions	9.75" x 11.5" / 25 cm x 29 cm
Handle & shaft compressed length	15.25" / 38.7 cm
Handle & shaft extended length	23.25" / 59 cm
Assembled compressed length	23.25" / 59 cm
Assembled extended length	31.25" / 79 cm

## DOZER 2D

Our mid-sized shovel with D-grip.

Same geometry as the 2T, but with D-grip for more control and comfort, especially for those wearing mittens. D-grip handle. 6061 T6 aluminum.

Weight	1.56 lb / 705 g
Blade dimensions	9.75" x 11.5" / 25 cm x 29 cm
Handle & shaft compressed length	15.75" / 40 cm
Handle & shaft extended length	23.25" / 59 cm
Assembled compressed length	24" / 61 cm
Assembled extended length	31.25" / 79 cm

### LEGEND

1/2/3	Blade size small/medium/large
T	T-Grip handle
D	D-Grip handle
H	Hoe mode capability
UL	Ultralight



## AVALANCHE SHOVELS WITH INTEGRATED SAWS

## DOZER 2H

The granddaddy of our shovel line, with hoe mode.

The updated version of our original Dozer. Hoe mode provides added efficiency when "padding" chunks of debris without lifting. T-grip handle. 6061 T6 aluminum.

Weight	1.69 lb / 765 g
Blade dimensions	9.75" x 11.5" / 25 cm x 29 cm
Handle & shaft compressed length	15.25" / 38.7 cm
Handle & shaft extended length	23.5" / 60 cm
Assembled compressed length	23.5" / 60 cm
Assembled extended length	31.5" / 80 cm
Colors	Blue, Orange

## DOZER 3D

Our working shovel for industrial use—and for building huge kickers.\*

Move huge volumes of snow with our largest blade. D-grip handle. 6061 T6 aluminum.

\* Does not fit in shovel compartment of BCA Float and Stash packs.

Weight	1.94 lb / 880 g
Blade dimensions	11" x 13.3" / 28 cm x 34 cm
Handle & shaft compressed length	15.75" / 40 cm
Handle & shaft extended length	23.25" / 59 cm
Assembled compressed length	24.75" / 63 cm
Assembled extended length	32" / 81 cm

## D-2 EXT WITH FOLDING SAW

Our original D-2 EXT with integrated wood saw.

Medium-sized blade, hoe mode, and 16cm folding wood saw stowed in oval shaft. Folding saw includes high strength polymer handle and 420 stainless steel taperground, razor teeth blade. T-grip handle. 6061 T6 aluminum.

Weight	2.1 lb / 947 g
Blade dimensions	10" x 11" / 25.4 cm x 27.9 cm
Collapsed handle & shaft length	18" / 46 cm
Assembled length extended hoe	24.5" / 62 cm
Assembled length extended shovel	31.9" / 81 cm
Saw blade length	6.3" / 16 cm
Saw total length	15" / 38 cm

## A-2 EXT WITH SAW

Locked and loaded for easy deployment.

Medium-sized blade, hoe mode, and 16cm folding wood saw stowed in oval shaft. Folding saw includes high strength polymer handle and 420 Stainless Steel taperground, razor teeth blade. T-grip handle. 6061 T6 aluminum.

Weight	1.9 lb / 880 g
Blade dimensions	10" x 11" / 25.4 cm x 27.9 cm
Collapsed handle & shaft length	17" / 43 cm
Assembled collapsed length	25" / 64 cm
Assembled length extended shovel	30.5" / 77 cm
Saw blade length	11.5" / 29 cm
Saw total length	16.3" / 41 cm

# STASH™

## BACKPACKS

### ORGANIZED FOR ADVENTURE

Our rugged Stash packs maintain our key Stash features: zippered back panel access (except on Stash 20); external shovel carry options; fleecelined goggle pockets; moisture drain holes, and—most important—freezeproof Stash hydration sleeve in one shoulder strap and BC Link sleeve in the other.

#### STASH FEATURE CHART

	STASH 25 THROTTLE	STASH 20	STASH 30	STASH 40
Dedicated Tool Pocket for Shovel, Probe, Saw	●	●	●	●
BC Link Radio Integration	●	●	●	●
Insulated Hydration Shoulder Sleeve	●	●	●	●
Molded Back Panel	●	●	●	●
Back Panel Access	●		●	●
Compression Straps	●	●	●	●
Stowable Helmet Sling		●	●	●
Shovel Compartment Moisture Drain Holes	●	●	●	●
External Fleece-lined Goggle Pocket	●		●	
Internal Fleece-lined Goggle Sleeve		●		
Hip Belt Pocket(s)	●		●	●
Height Adjustable Hip Belt	●		●	●
Load Lifters	●		●	●
Wire Support Frame			●	●
BC Link Pocket with External Access	●			
Internal Support Frame	●			
Extendable Top Lid with Pocket for Overpacking				●
Vertical Snowboard Carry		●	●	●
A-Frame Ski Carry		●	●	●
Diagonal Ski Carry		●	●	●

## STASH 25 THROTTLE

Our dedicated Stash pack for snowmobiling, designed for aggressive riding. Features external (and internal) shovel carry system, external fleece-lined goggle pocket, and external access to BC Link base unit for recharging and channel reprogramming.

Volume	1,526 cubic inches / 25 liters
Weight	3.2 lb / 1,448 g
Materials	210 denier ladder nylon w/ PU coating (main) 420 denier nylon w/ PU coating (high wear areas)
Torso Size	18" - 21" / 45.7 - 53.3 cm
Colors	Night Camo



## STASH 20

Our lightest, lowest profile non-sled-specific pack.

Volume	1,220 cubic inches / 20 liters
Weight	2.6 lb / 1,170 g
Materials	210 denier rip-stop nylon 420 denier oxford nylon
Torso Size	17.5" - 19.5" / 44.4 - 49.5 cm
Colors	Graphite, Kingfisher Green



## STASH 30

Our best-selling, most versatile non-sled-specific pack.

Volume	1,830 cubic inches / 30 liters
Weight	3.3 lb / 1,490 g
Materials	210 denier rip-stop nylon 420 denier oxford nylon
Torso Size	18" - 21" / 45.7 - 53.3 cm
Colors	Black, Crimson



## STASH 40

Our pro/guiding/diehard non-sled-specific pack for those carrying the full arsenal of gear.

Volume	2,440 cubic inches / 40 liters
Weight	3.6 lb / 1,642 g
Materials	210 denier rip-stop nylon 420 denier oxford nylon
Torso Size	18" - 21" / 45.7 - 53.3 cm
Colors	Red





# SNOW STUDY TOOLS

Elevate your game. Sign up for an avalanche course and bring these with you.



## BCA SNOW STUDY KIT

Durable fabric carrying case with a variety of pockets and slots for our snow study tools.

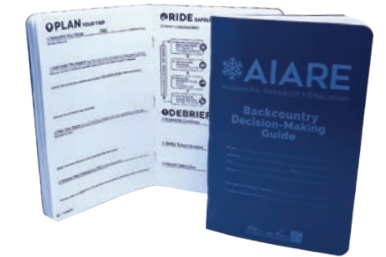
Includes:	Slope Meter
	Polycarbonate Crystal Card
	Analog Thermometer
	15x Magnifying Loupe
	ECT Cord



## 35 CM SAW

Cuts snow, ice and wood. Stainless steel blade. Glass filled nylon injection molded handle. Molded nylon blade cover included. Laser-etched centimeter markings, plus 1 mm and 3 mm grids.

Weight	6.9 oz / 195 g saw only 8.7 oz / 240 g saw with blade cover
Saw blade length	13.8" / 35 cm
Total saw length	19" / 48 cm



## BACKCOUNTRY DECISION-MAKING GUIDE

This brand new version of the AIARE "blue book" has been redesigned to fit the new Pro/Rec class format in North America. Developed by the American Institute for Avalanche Research and Education (AIARE) to meet the American Avalanche Association (A3) SWAG standards. Printed on water-resistant paper.

# URBAN BACKPACKS

Made from leftover Float airbag pack material. Light, durable—and ideal for those unfortunate days when you're not riding.



## SHIFTY

Our basic day pack for school, conferences, festivals, and other casual events.

- Laptop/tablet sleeve fits most 15" laptops
- Stretch-woven side pockets
- Front organizational pocket
- Accessory loop

Volume	1,526 cubic inches / 25 liters
Weight	1.6 lb / 764 g
Materials	210D / 420D nylon
Color	Navy/Black



## BACKY

Our rugged, highly water resistant, mid-sized urban pack.

- Laptop/tablet sleeve fits most 15" laptops
- Stretch-woven side pockets
- Two (2) exterior accessory pockets
- Accessory loops
- Compression straps
- Hydration sleeve and port
- Internal mesh accessory pocket

Volume	1,526 cubic inches / 25 liters
Weight	1.8 lb / 856 g
Materials	210D / 420D nylon
Color	Black



## 360 COMMUTE GRAB

Our most tricked-out urban pack for commuting to work via bus, bike, foot—or even skateboard.

- Laptop/tablet sleeve fits most 15" laptops
- Stretch-woven side pockets
- Front organizational pocket
- Accessory loops
- Compression straps
- Hydration sleeve and port

Volume	1,953 cubic inches / 32 liters
Weight	1.9 lb / 898 g
Materials	210D / 420D nylon
Color	Brick/Black

# EDUCATIONAL RESOURCES

**EDUCATION + GEAR = SAVED LIVES**

At BCA, we see ourselves as educators just as much as manufacturers. With an influx of new backcountry users knocking on the door this season, this is more important than ever before. That's why you'll see that our new website is just as rich in education as it is in product. On our Learn pages, you'll see a new lineup of videos and blogs on "how to choose" and "how to use" the right backcountry products. Along with our existing "Backcountry Basics" and "Avalanche Rescue 101" series, these are designed for first-time backcountry riders.

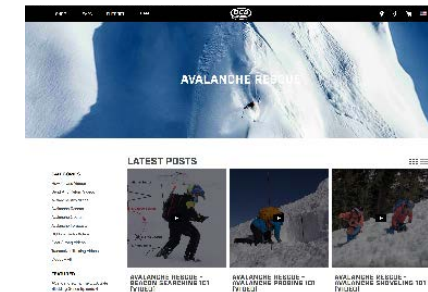
While you're there, peruse our "Send and Return" video series. You'll see our athletes setting an example for their peers: riding hard, but only according to the avalanche conditions. You'll see them putting their avalanche training to work: checking the avalanche forecast, performing trailhead and stability tests, and choosing terrain appropriate for the conditions.

Now you can use the updated BCA app on any smartphone platform to check the avalanche bulletin, measure slope angle/aspect/elevation, and locate BCA retailers and Float cylinder refill and exchange centers. Just search for "BCA Backcountry Access" on your iPhone or Android.

When the goal is to save lives, product is only part of the equation. Even though we've been making the most reliable and easy-to-use avalanche gear on the planet for over 25 years, we hope you never, ever have to use it—except for practice.

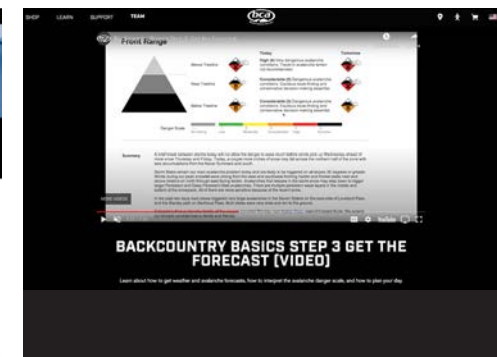
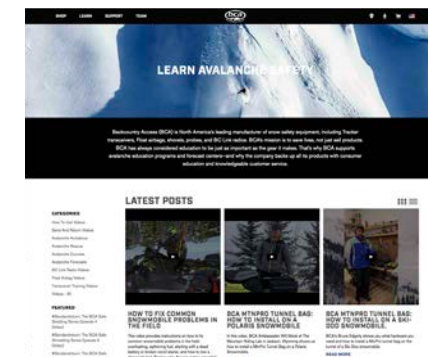
## HOW-TO VIDEOS

Hands-on instructions on how to choose and how to use BCA safety products.



## BACKCOUNTRY BASICS AND AVALANCHE RESCUE 101

Get the gear, get the training, and get the forecast. Learn about tour planning and human factors in the backcountry. And BCA's specialty: how to beacon search, probe, and shovel.



## BLOG

Read up on the latest research, techniques, trip reports, and avalanche-related events.

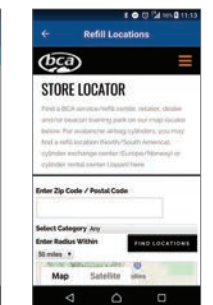
### NAVIGATING A WHITEOUT – TIPS FOR SLEDDERS



We've all been there. A snowstorm rolls in, or the wind picks up, and we can't see a thing. Sometimes we sit it out, and it ends soon; other times we wonder when it's going to end. If zero-visibility conditions continue, there are some crucial decisions to be made. Here is a rundown of some skills and tools sledgers can use for navigating a whiteout.

## BCA APP

Check the avy forecast, take field measurements, find local BCA dealers and Float refill and exchange centers.



## CONTACT US

BCA Headquarters: [info@backcountryaccess.com](mailto:info@backcountryaccess.com), Tel: 303-417-1345

Europe: [info@k2sports.de](mailto:info@k2sports.de), Fon: +49 8856 8000

Canada: [bca@k2canada.com](mailto:bca@k2canada.com), Tel: 416-620-4125

Norway: [madshus@madshus.com](mailto:madshus@madshus.com), Tel: +47 61134300

Japan: [bca@k2japan.com](mailto:bca@k2japan.com), Phone: +81 3-6858-2311

## SOCIAL MEDIA

Follow us on our website, Facebook, Twitter, and Instagram for updates on BCA products, snow safety techniques and #sendandreturn reports. Stay ahead of the curve by learning from our library of videos on the BCA YouTube channel: [youtube.com/BackcountryAccess](https://youtube.com/BackcountryAccess).

[facebook.com/backcountryaccess](https://facebook.com/backcountryaccess) [instagram.com/backcountryaccess](https://instagram.com/backcountryaccess) [twitter.com/avalanchesafety](https://twitter.com/avalanchesafety)  
#avalanchesafety #sendandreturn

Backcountry Access, Inc.  
www.backcountryaccess.com  
2820 Wilderness Place, Unit H  
Boulder, Colorado 80301 USA  
800.670.8735



FRONT COVER: TEAM THUNDERSTRUCK HEAD HONCHO CLAY HOCKEL, ALPINE, WY. PHOTO: SHELLE MARLENEE/THUNDERSTRUCK FILMS  
BACK COVER: BCA AMBASSADOR WILL MOOK STYLIN' HIS FLOAT 15 TURBO AND MTNPRO TUNNEL BAG. PHOTO: THE PUBLIC WORKS