



Simplicity is fast.
Practice is faster.

2021-2022



**SIMPLICITY IS FAST.
PRACTICE IS FASTER.**

Since 1994, BCA has been laser-focused on saving lives through reliable, easy-to-use products and consumer education. By keeping it simple when you're under stress, you increase your chances of a successful live recovery. But even the most intuitive device requires training and practice—including shovels.

In 2021, we're launching a brand new line of avalanche shovels: The Dozers, named after our original D-2 "Dozer"—the first shovel ever designed specifically for "strategic shoveling."* These shovels are radically strong, light, and user-friendly. But the difference between a Dozer and another shovel is negligible compared to the difference between a random shoveler and a "strategic" shoveler. If you learn to chop and paddle, allocate manpower, and move the debris to all the right places, you're going to save valuable minutes—and potentially even a life.

There's a reason we're the best-selling backcountry brand in North America: simplicity. But that's only half the equation. The other half is up to you: learning and practicing.



*See www.backcountryaccess.com/learn

TABLE OF CONTENTS

Float Avalanche Airbags	3
Tracker Avalanche Transceivers	9
Tracker Packages	12
BC Link Group Communication	13
Stealth Avalanche Probes	15
Dozer Avalanche Shovels	17
BC Air Touring Helmets	21
Stash Backpacks	22
Scepter Poles	25
Snow Study Tools	27
BCA Climbing Skins	30
Urban Backpacks	30
Educational Resources	31

PRODUCTS

Dozer 1T
Dozer 1T-UL
Dozer 2T
Dozer 2D
Dozer 2H
Dozer 3D
BC Air Touring Helmets



FLOAT™

AVALANCHE AIRBAGS

STAY AFLOAT.

The Float avalanche airbag system is tested and proven to reduce trauma and keep you on the surface during an avalanche. Our cylinder is now half the size of other compressed air systems and fits in the same compartment as the airbag itself—reducing weight and freeing up space in the main compartment.

The Float 2.0 system is not compatible with Float 1.0 cylinders (and vice versa). Patent: #7,878,141
Cylinders are sold separately.



FLOAT AVALANCHE AIRBAG RECOMMENDED USE CHART

	FLOAT 12	FLOAT 22	FLOAT 32	FLOAT 42
Sidecountry	●	●		
Backcountry Day Trip		●	●	●
Patrol			●	●
Guiding/Overnights				●
Cat/Heli	●	●		
Snowmobile	●	●	●	

FLOAT FEATURE CHART

	FLOAT 12	FLOAT 22	FLOAT 32	FLOAT 42
BC Link Compatible	●	●	●	●
Hydration Compatible	●	●	●	●
Dual Zippered Shoulder Straps	●	●	●	●
Diagonal Ski Carry	●	●	●	●
Ergo Trigger	●	●	●	●
Vertical Snowboard Carry	●	●	●	●
Height-Adjustable Hip Belt	●	●	●	●
Molded Back Panel	●	●	●	●
Ice Axe Carry - External	●	●	●	●
Helmet Carry - Removable	●	●	●	●
Hip Belt Pocket	●	●	●	●
Hip Belt Tool Loops	●	●	●	●
Dedicated Shovel/Probe Compartment		●	●	●
Internal Shovel/Probe Compartment	●			
Internal Support Frame			●	●
Compression Straps			●	●
Load Lifters			●	●
Fleece-lined Goggle Sleeve			●	●
Back Panel Access				●

FLOAT 12

Our low volume, low profile Float pack for heli/cat/out-of-bounds riding, and snowmobiling. Optimized for small-to-medium torso lengths.



Pack Volume	732 cubic inches / 12 liters (with system)
Weight	6.0 lb / 2,700 g (full system with full cylinder)
	4.7 lb / 2,142 g (full system without cylinder)
	3.3 lb / 1,480 g (pack only)
Materials	330 denier mini ripstop nylon w/ PU coating (main)
	420 denier oxford nylon w/ PU coating (high wear areas)
	200 denier polyester (lining)
Zippers	YKK w/ DWR coating
Torso Size	17.5" - 19.5" / 44.4 - 49.5 cm
Color	Black/Red

FLOAT 32

Our full-featured pack for dedicated backcountry junkies carrying all the essentials.



Pack Volume	1,952 cubic inches / 32 liters (with system)
Weight	6.4 lb / 2,942 g (full system with full cylinder)
	5.2 lb / 2,366 g (full system without cylinder)
	3.8 lb / 1,704 g (pack only)
Materials	330 denier mini ripstop nylon w/ PU coating (main)
	420 denier oxford nylon w/ PU coating (high wear areas)
	200 denier polyester (lining)
Zippers	YKK w/ DWR coating
Torso Size	17.5" - 20.5" / 44.4 - 52.1 cm
Color	Black/Lime, Red

FLOAT 22

Our medium-sized Float pack for close-in backcountry riding.



Pack Volume	1,342 cubic inches / 22 liters (with system)
Weight	6.1 lb / 2,780 g (full system with full cylinder)
	4.9 lb / 2,222 g (full system without cylinder)
	3.4 lb / 1,560 g (pack only)
Materials	330 denier mini ripstop nylon w/ PU coating (main)
	420 denier oxford nylon w/ PU coating (high wear areas)
	200 denier polyester (lining)
Zippers	YKK w/ DWR coating
Torso Size	17" - 20" / 43.1 - 50.8 cm
Color	Black/Orange, Lime

FLOAT 42

For pros, ski patrollers, guides, and those prepared for long days or overnights.



Pack Volume	2,563 cubic inches / 42 liters (with system)
Weight	7.1 lb / 3,215 g (full system with full cylinder)
	5.9 lb / 2,658 g (full system without cylinder)
	4.4 lb / 1,998 g (pack only)
Materials	210 denier mini ripstop nylon w/ PU coating (main)
	420 denier oxford nylon w/ PU coating (high wear areas)
	200 denier polyester (lining)
Zippers	YKK w/ DWR coating
Torso Size	18" - 21" / 45.7 - 53.3 cm
Color	Black/Red



FLOAT 2.0 COMPRESSED AIR CYLINDER



The refillable Float compressed air cylinder is the power and driving force behind our Float system. When the Float trigger is pulled, it activates the release of 3,000 psi (207 bar) of compressed air, inflating the airbag. Always make sure your cylinder is full and connected correctly before heading out. Can be purchased full or empty. Only compatible with Float 2.0 systems. Sold separately. Weight full..... 1.2 lb / 558 g

CONSUMER REFILL KIT



Additional kit. Comes standard with each Float cylinder purchase.

Includes:

- 5/32 Allen wrench
- Toothpick
- 5 small O-rings
- 2 valve-to-tank O-rings
- High-vacuum grease

REFILL CENTER STOCK KIT



Includes:

- 100 small O-rings
- 100 refill stickers
- 10 valve-to-tank O-rings
- Container of high-vacuum grease

TRACKER™

AVALANCHE TRANSCEIVERS

**SIMPLICITY IS FAST.
PRACTICE IS FASTER.**

Saving lives is what we do best. We invented the digital multi-antenna avalanche transceiver, and now we're making them even more durable than ever before. Our Tracker avalanche transceivers are the most widely used in North America—with a reputation worldwide as the industry benchmark in ease-of-use and simplicity. Tracker4 upholds the Tracker tradition with an ergonomic, bombproof case and big new display for workhorses tough on their gear.

TRACKER FEATURE CHART

	TRACKER4	TRACKER3+	TRACKER S
Three Antenna	●	●	●
Temperature Resistant LED Display	●	●	●
Multiple Burial Indicator	●	●	●
Close Proximity Indicator	●	●	●
Mute Mode	●	●	●
Auto Revert Mode	●	●	●
Big Picture Mode	●	●	●
Signal Suppression Mode	●	●	●
Motion-Sensing Auto Revert	●	●	●
Updatable Software	●	●	●

TRACKER4 Upholding the Tracker tradition.

Tracker avalanche transceivers have long been the fastest, easiest-to-use beacons in the industry. T4 just took it up a notch, with a rubberized overmolded case, larger LED display, and the same Tracker interface that basically makes it impossible not to find your companion. Signal suppression and Big Picture modes for no-nonsense multiple-victim searching. Motion-sensing auto revert-to-transmit mode. USB-C port for downloadable software updates.

All transceivers include harness and batteries. U.S. patent numbers: 6,167,249 & 6,484,021, B

Weight	~ 7.6 oz / 215 g including batteries, not harness
Dimensions	~ 4.7" x 3.0" x 1.0" / 12 cm x 7.5 cm x 2.6 cm
Frequency	457 kHz
Power supply	Three AAA alkaline batteries
Warranty	5 years limited



TRACKER3+

Tracker's legendary ease-of-use in a smaller package.

The Tracker3+ has Tracker's renowned ease of use and instantaneous real-time display. Designed to be "pocket friendly," T3+ is our smallest, thinnest Tracker.

Signal suppression and Big Picture modes for no-nonsense multiple-victim searching. Motion-sensing auto revert-to-transmit mode. Mini USB port for downloadable software updates.

All transceivers include harness and batteries. U.S. patent numbers: 6,167,249 & 6,484,021, B

Weight	7.6 oz / 215 g including batteries, not harness
Dimensions	4.6" x 2.8" x 0.9" / 11.6 cm x 7.1 cm x 2.3 cm
Frequency	457 kHz
Power supply	Three AAA alkaline batteries
Warranty	5 years limited



TRACKER S

Our streamlined, more affordable version of Tracker3+.

All the performance of T3+ and T4, without the luxuries of motion-sensing and updatable software.

All transceivers include harness and batteries. U.S. patent numbers: 6,167,249 & 6,484,021, B

Weight	7.2 oz / 205 g including batteries, not harness
Dimensions	4.5" x 2.8" x 1.0" / 11.5 cm x 7.1 cm x 2.6 cm
Frequency	457 kHz
Power supply	Three AAA alkaline batteries
Warranty	5 years limited



BCA CUSTOMER SERVICE MANAGER DANA COWLEY SEARCHES WITH HER TRUSTY T3+. PHOTO: KIM GODFREY

TRACKER PACKAGES

Bundling the essentials makes it a slam-dunk to gear up for your first trip in the backcountry.

T4 RESCUE PACKAGE

Our most advanced rescue package.
Includes: Tracker4, Stealth 270 probe, 2020 B-1 EXT shovel.



T3+ RESCUE PACKAGE

Our best-selling rescue package.
Includes: Tracker3+, Stealth 270 probe, 2020 B-1 EXT shovel.



TS RESCUE PACKAGE

Make your dollars go farther, with our streamlined value package.
Includes: Tracker S, Stealth 270 probe, 2020 B-1 EXT shovel.



BC Link™

GROUP COMMUNICATION

NEVER ALONE.

Maximize your line—and maximize your safety. Find separated friends, communicate plans, stick your line and share observations in real-time with the BC Link group communication system. The Smart Mic user interface is located at your fingertips: to change settings, no need to dig the radio from your pack. Battery lasts for several days without recharging, even in cold temps.

BC LINK FEATURE CHART

	Euro BC LINK 2.0	BC LINK 2.0	BC Link
Option for pre-set channel selections	●	●	●
Compatible with FRS/GMRS radios that operate on FRS bands		●	●
22 FRS channels + 121 privacy codes		●	●
Compatible with all PMR446 European radios	●		
8 PMR446 channels + 38 privacy codes	●		
Waterproof to IP56 standards	●	●	●
0.5 Watt	●	●	●
1 Watt			●
2 Watt		●	



BC LINK 2.0

More durable, more weather resistant, and more style. Smart Mic grill is impervious to packing with snow. On/off/channel selection dial switch is protected from inadvertent channel changing. Stylish industrial design!

- Durable cord/base unit connection
- New battery power percentage display
- New factory reset option on channel pre-sets
- Maximum battery life: up to 40 hours in standby mode
- Average battery life: 8 hours of normal use
- Integrated 2300 mAh lithium ion battery, plus charger
- 60 second return-to-standby mode saves airtime and battery power
- Base unit can be clipped to belt or stashed inside backpack

Smart Mic dimensions	3.5" x 2.1" x 1.5" / 9.0 cm x 5.4 cm x 4.0 cm
Base unit dimensions	6.3" x 2.2" x 1.4" / 16 cm x 5.6 cm x 3.5 cm
Weight	11.0 oz / 312 g
Usable range	Approx. 6 miles / 9.5 km line of sight *
Maximum range	Up to 40 miles / 64 km line of sight *
Color	Black
Smart Mic Includes:	Push-to-talk button
	Channel control
	Loudspeaker
	Battery indicator
	Earphone jack



BC LINK

Our wildly popular, nearly hands-free group communication system designed specifically for backcountry recreation in cold temps. For use with all backpacks, optimized for BCA Float and Stash packs. Extra batteries sold separately. Camo available in North America only.

- Maximum battery life: up to 40 hours in standby mode
- Average battery life: 8 hours of normal use
- Rechargeable/removable 2200 mAh lithium ion battery, plus charger
- Base unit can be clipped to belt or stashed inside backpack

Smart Mic dimensions	3.3" x 1.8" x 1.0" / 8.0 cm x 4.5 cm x 4.0 cm
Base unit dimensions	6.0" x 2.5" x 2.0" / 15 cm x 6.0 cm x 5.0 cm
Weight	12.0 oz / 340 g
Usable range	Approx. 6 miles / 9.5 km line of sight *
Maximum range	Up to 32 miles / 51 km line of sight *
Color	Black, Camo
Smart Mic Includes:	Push-to-talk button
	Channel control
	Loudspeaker
	Battery indicator
	Earphone jack



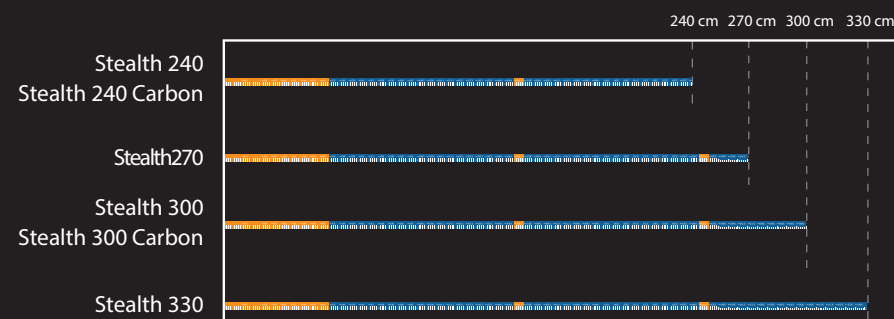
*Camo color only available in North America

STEALTH

AVALANCHE PROBES

EVERY SECOND COUNTS.

BCA's updated probes feature dual-sized depth markings that are easy to see when you're performing a rescue or logging a snow profile. Pro-level aluminum models are laser-etched to prevent wear. Our Stealth Quick-Lock hardware creates a smaller bundle when folded up and eliminates loose cables that can whip you in the face when you're furiously probing.



Key depths are highlighted in orange: 1.5 m (for coarse probing), 2.5 m (for fine probing), and the bottom section (to alert shovelers that they're getting close).



BCA Stealth probes create a tight bundle when disassembled. Tapered joints enable fast reassembly.

Depth measurements are in two sizes: 5 cm increments on one side (for rescue) and 1 cm increments on the other side (for snow study).



STEALTH 240

Compact, lightweight and economical.

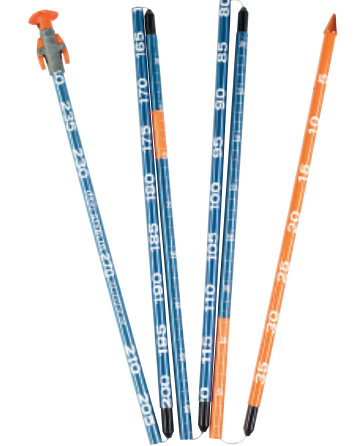
Weight	8.8 oz / 250 g
Extended length	94" / 240 cm
Collapsed length	15.7" / 40 cm
Diameter	0.43" / 1.1 cm



STEALTH 240 CARBON

The ideal minimalist and lightweight probe.

Weight	7.6 oz / 215 g
Extended length	94" / 240 cm
Collapsed length	15.7" / 40 cm
Diameter	0.43" / 1.1 cm



STEALTH 270

Our mainstream probe for recreationists.

Weight	10.4 oz / 295 g
Extended length	106" / 270 cm
Collapsed length	17.7" / 45 cm
Diameter	0.47" / 1.2 cm



STEALTH 300

Our go-to probe for professionals and advanced recreationists. Laser-etched depth markings. Shorter collapsed length now fits in more packs.

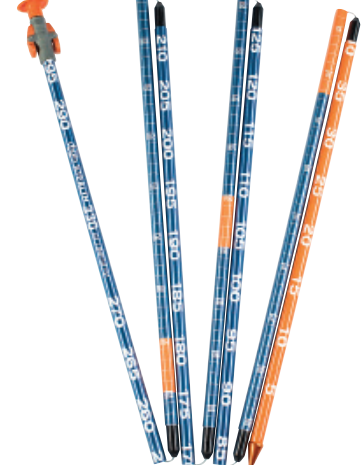
Weight	11.6 oz / 330 g
Extended length	118" / 300 cm
Collapsed length	17.0" / 43 cm
Diameter	0.47" / 1.2 cm



STEALTH 300 CARBON

Long enough for deep snowpacks, but lighter than aluminum.

Weight	10.2 oz / 290 g
Extended length	118" / 300 cm
Collapsed length	17.0" / 43 cm
Diameter	0.51" / 1.3 cm



STEALTH 330

Our longest, burliest probe for professionals and those traveling in deep snowpacks. Laser-etched depth markings.

Weight	12.3 oz / 350 g
Extended length	130" / 330 cm
Collapsed length	18.5" / 47 cm
Diameter	0.51" / 1.3 cm

DOZER™ New

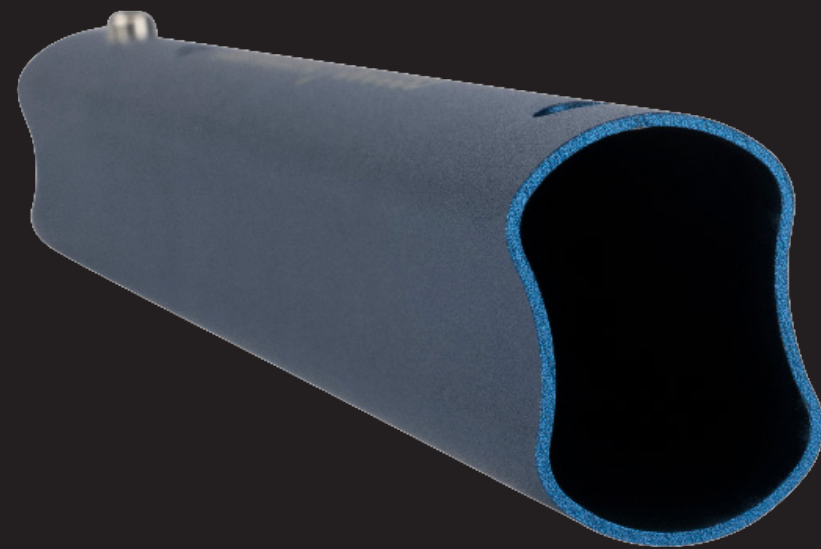
SHOVELS

DIG LIKE A MACHINE.

Our new ovo-concave shaft, low-profile stompable blades, and wide range of cored-out handles make BCA shovels stronger, lighter, and more packable than ever before.

This new line is inspired by our legendary D-2 EXT “Dozer” shovel. It’s so popular among our core followers, we’ve named our entire new line after it!

BCA was the first to create an avalanche shovel with a non-round shaft, to prevent breakage while prying. We’ve taken our groundbreaking oval design and added a concave radius on both sides, to make it even stronger, without adding weight. Tightly toleranced “variable offset” sliding surfaces between the inner and outer walls of the extendable shaft prevent ice buildup, for reliable deployment.



In hard-slab avalanches and deep burials, avalanche debris can be difficult to penetrate. With our flat “stomp edge” on the top of the blade—and heat-treated 6061 aluminum—you can penetrate just about anything by adding body weight. Auto-engaging spring pins at the blade/shaft connection make for faster, hands-free assembly/deployment.



BCA shovel blades lay flat in your pack with no protruding ferrule or “neck,” leaving more room for other backcountry essentials (and luxuries too!). The front third of all blades offers a smooth surface for clean snowpit walls during snow stability tests.



All BCA extendable models are designed to meet the UIAA standard for avalanche rescue shovels.

DOZER 1T

Our most popular size: made for the masses.

The updated version of our former B-1 EXT, North America's best-selling avalanche shovel. T-grip handle. 6061 T6 aluminum.

Weight	1.2 lb / 545 g
Blade dimensions	9" x 10.5" / 23 cm x 27 cm
Handle & shaft compressed length	15.25" / 38.7 cm
Handle & shaft extended length	23.25" / 59 cm
Assembled compressed length	22.25" / 57 cm
Assembled extended length	30" / 76 cm
Colors	Blue, Green

DOZER 1T-UL

Our lightest shovel, for the weight-conscious crowd.

Cored-out blade and thinner-walled 7075 T6 aluminum make this the lightest digging machine in our fleet. T-grip handle.

Weight	0.96 lb / 435 g
Blade dimensions	9" x 10.5" / 23 cm x 27 cm
Handle & shaft compressed length	15.25" / 38.7 cm
Handle & shaft extended length	23.25" / 59 cm
Assembled compressed length	22.25" / 57 cm
Assembled extended length	30" / 76 cm

DOZER 2T

Our mid-sized shovel for pros and advanced recreationists.

Larger blade and longer extended length than the 1T. For those as serious about digging and snow safety as we are. T-grip handle. 6061 T6 aluminum.

Weight	1.5 lb / 680 g
Blade dimensions	9.75" x 11.5" / 25 cm x 29 cm
Handle & shaft compressed length	15.25" / 38.7 cm
Handle & shaft extended length	23.25" / 59 cm
Assembled compressed length	23.25" / 59 cm
Assembled extended length	31.25" / 79 cm

DOZER 2D

Our mid-sized shovel with D-grip.

Same geometry as the 2T, but with D-grip for more control and comfort, especially for those wearing mittens. D-grip handle. 6061 T6 aluminum.

Weight	1.56 lb / 705 g
Blade dimensions	9.75" x 11.5" / 25 cm x 29 cm
Handle & shaft compressed length	15.75" / 40 cm
Handle & shaft extended length	23.25" / 59 cm
Assembled compressed length	24" / 61 cm
Assembled extended length	31.25" / 79 cm

LEGEND

1/2/3	Blade size small/medium/large
T	T-Grip handle
D	D-Grip handle
H	Hoe mode capability
UL	Ultralight



DOZER 2H

The granddaddy of our shovel line, with hoe mode.

The updated version of our original Dozer. Hoe mode provides added efficiency when "padding" chunks of debris without lifting. T-grip handle. 6061 T6 aluminum.

Weight	1.69 lb / 765 g
Blade dimensions	9.75" x 11.5" / 25 cm x 29 cm
Handle & shaft compressed length	15.25" / 38.7 cm
Handle & shaft extended length	23.5" / 60 cm
Assembled compressed length	23.5" / 60 cm
Assembled extended length	31.5" / 80 cm
Colors	Blue, Orange

DOZER 3D

Our working shovel for industrial use—and for building huge kickers.*

Move huge volumes of snow with our largest blade. D-grip handle. 6061 T6 aluminum. * Does not fit in shovel compartment of BCA Float and Stash packs.

Weight	1.94 lb / 880 g
Blade dimensions	11" x 13.3" / 28 cm x 34 cm
Handle & shaft compressed length	15.75" / 40 cm
Handle & shaft extended length	23.25" / 59 cm
Assembled compressed length	24.75" / 63 cm
Assembled extended length	32" / 81 cm

SHAXE SPEED

Converts to ice axe, for the weight conscious.

This fixed-length rescue shovel comes with an interchangeable ice axe head for Type 1 (Basic) ice axe use. Saves weight and space in your pack by eliminating redundant shaft for a separate ice axe. T-grip handle. 6061 T6 aluminum.

Weight in shovel mode	1.4 lb / 654 g
Weight in axe mode	0.6 lb / 290 g
Total packed weight (all parts)	1.7 lb / 756 g
Pick material	7075 T6 aluminum
Blade dimensions	9.4" x 11.2" / 24 cm x 28.5 cm
Shovel mode length	27.5" / 70 cm
Axe mode length	20" / 51 cm

SHAXE TECH

Converts to a more aggressive axe for steeper ascents.

Curved fixed-length shaft and stainless steel head with additional 9° of pick angle provide higher performance on harder, steeper climbs. T-grip handle. 6061 T6 aluminum.

Weight in shovel mode	1.5 lb / 706 g
Weight in axe mode	1.0 lb / 436 g
Total packed weight (all parts)	2.0 lb / 902 g
Pick material	420 stainless steel
Blade dimensions	9.4" x 11.2" / 24 cm x 28.5 cm
Shovel mode length	27" / 68 cm
Axe mode length	20" / 51 cm

BC AIR™ New

TOURING HELMETS

GOOD FOR YOUR HEAD.

Who says avalanches only happen on the descent? The BC Air helmet is so light and airy you can wear it on the way up and on the way down. That means no more micromanaging your headwear between laps.

With integrated headlamp clips, a Boa® fit system, and massive ventilation, you've got everything you need for cranium protection, but only weighing in at 340 grams/11.9 oz. (S/M).



BCA SALESMAN ANDY WENBERG POINTS 'EM IN HIS BC AIR HELMET. PHOTO: @JEFFCRICCO

BC AIR New



Size		Measurement	Weight
Small	S	51 - 55 cm 20 1/2" x 21 5/8"	11.9 oz / 340 g
Medium	M	55 - 59 cm 22" x 23 1/8"	11.9 oz / 340 g
Large/X-Large	L/XL	59 - 62 cm 23 1/2" x 24 3/8"	13.5 oz / 385 g

Colors	Black
	White
	Orange

Features	Lightweight in-mold PC construction
	Highly ventilated
	Low volume packability
	Headlamp clips
	Boa® Fit Systems
Removable earpads	

Certification	ASTM F2040-18, CPSC - Bicycle
	EN1077:2007 (class B), EN 1078: 2012+A1:2013

In-Mold Construction:

In-mold is the premium construction for ultra-lightweight performance and is characterized by an EPS liner that is molded directly to a lightweight polycarbonate (PC) shell. The result is a construction so light you'll forget it's even there.

Passive Channel Venting:

Channels on the inside surface of the EPS direct air flow between your head and the helmet, removing moisture and excess heat for all-day comfort.

Removable Ear Pads:

Ability to easily remove ear pads for reduced bulk while retaining the fit system.



STASH™

BACKPACKS

ORGANIZED FOR ADVENTURE.

Our rugged Stash packs maintain our key Stash features: zippered back panel access (except Stash 20); carry options for ice axes, skis, and snowboards; fleece-lined goggle pockets; drain holes, and—most important—freezeproof Stash hydration sleeve in one shoulder strap and BC Link sleeve in the other.



PHOTO: THE PUBLIC WORKS

STASH FEATURE CHART

	STASH 20	STASH 30	STASH 40
Dedicated Tool Pocket for Shovel and Probe	●	●	●
BC Link Radio Integration	●	●	●
Insulated Hydration Shoulder Sleeve	●	●	●
Vertical Snowboard Carry	●	●	●
A-Frame Ski Carry	●	●	●
Diagonal Ski Carry	●	●	●
Compression Straps	●	●	●
Stowable Helmet Sling	●	●	●
Dual Ice Axe Carry	●	●	●
Moisture Drain Holes	●	●	●
Back Panel Access		●	●
External Fleece-lined Goggle Pocket		●	
Internal Fleece-lined Goggle Pocket	●		
Hip Belt Pockets		●	●
Height Adjustable Waist Belt		●	●
Load Lifters		●	●
Wire Support Frame		●	●
Extendable Top Lid with Pocket for Overpacking			●

STASH 20

Our in-bounds/out-of-bounds pack for aggressive freeriding.

Volume	1,220 cubic inches / 20 liters
Weight	2.6 lb / 1,170 g
Materials	210 denier rip-stop nylon 420 denier oxford nylon
Torso Size	17.5" - 19.5" / 44.4 - 49.5 cm
Colors	Graphite, Kingfisher Green



STASH 30

BCA's most versatile Stash pack for all-day charging.

Volume	1,830 cubic inches / 30 liters
Weight	3.3 lb / 1,490 g
Materials	210 denier rip-stop nylon 420 denier oxford nylon
Torso Size	18" - 21" / 45.7 - 53.3 cm
Colors	Black, Crimson



STASH 40

Our pro/guiding/diehard pack for those carrying the full arsenal of gear.

Volume	2,440 cubic inches / 40 liters
Weight	3.6 lb / 1,642 g
Materials	210 denier rip-stop nylon 420 denier oxford nylon
Torso Size	18" - 21" / 45.7 - 53.3 cm
Colors	Red

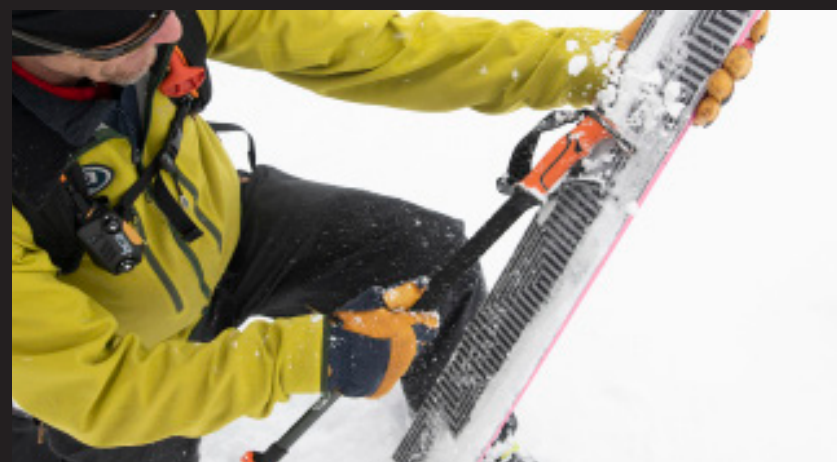


SCEPTER

POLES

THE ULTIMATE TOOL FOR SERIOUS BACKCOUNTRY RIDING—AND SAFETY.

Our redesigned Scepters are made for high-performance touring and snow safety. Scraper Grip provides easy snow/ice scraping from topsheets, bases, and skins on the fly. Releasable straps quickly separate from your poles if you snag a tree or, worse, get caught in a slide. Utility hooks on the grip and Scepter basket enable flipping your heel risers and boot levers without bending over. EVA foam on upper shaft provides secure, lightweight chokeup grip. Now available in three fixed-length sizes for full-on resort shredding.



SCEPTER CARBON ALUMINUM

Our stiffest adjustable pole for the high-performance crowd.

Shaft	Carbon lower, 7075 aluminum upper
Weight	10.7 oz / 303 g (single pole)
Sizes	Adjustable 105 cm - 145 cm
Color	Black
Grip	BCA Scraper Grip with releasable strap
Strap	Adjustable woven
Basket	BCA Multi-function
Tip	Carbide



SCEPTER ALUMINUM

Our mainstream adjustable pole for all backcountry travels.

Shaft	7075 aluminum
Weight	10.3 oz / 293 g (single pole)
Sizes	Adjustable 105 cm - 145 cm
Color	Black/Orange
Grip	BCA Scraper Grip with releasable strap
Strap	Adjustable woven
Basket	BCA Multi-function
Tip	Carbide



SCEPTER 4S

The Scepter 4s is our fully collapsible and adjustable all-season pole, designed for splitboarding and hiking.

Shaft	7075 aluminum
Weight	12 oz / 338 g (single pole)
Sizes	Adjustable 110 cm -130 cm, 43 cm collapsed
Color	Black/Orange
Grip	BCA Scraper Grip with releasable strap
Strap	Adjustable woven
Basket	BCA Multi-function
Tip	Carbide



SCEPTER FIXED LENGTH

Our streamlined fixed-length sticks for backcountry or resort riding.

Shaft	7075 aluminum
Weight	9.3 oz / 263 g (single pole of 125 cm)
Sizes	115 cm, 120 cm, 125 cm, 130cm, 135 cm
Color	Black/Orange
Grip	BCA Scraper Grip with releasable strap
Strap	Adjustable woven
Basket	BCA Multi-function
Tip	Steel





SNOW STUDY TOOLS

ELEVATE YOUR GAME.

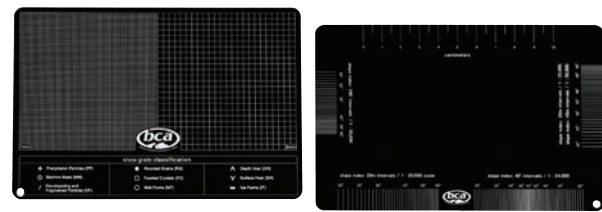
Many avalanche courses require their students to bring their own snow study tools. We designed ours in conjunction with North America's leading avalanche educators. The more reliable data you collect, the more reliable your decision-making will be.



35 CM SAW

Cuts snow, ice and wood. Stainless steel blade. Glass filled nylon injection molded handle. Molded nylon blade cover included. Laser-etched centimeter markings, plus 1 mm and 3 mm grids.

Weight	6.9 oz / 195 g saw only 8.7 oz / 240 g saw with blade cover
Saw blade length	13.8" / 35 cm
Total saw length	19" / 48 cm



ALUMINUM CRYSTAL CARD

Includes snow grain classifications, slope angle map tool, and 1 mm and 3 mm grids for snowpack evaluations.

Dimensions	6" x 4" / 15 cm x 10 cm
------------	-------------------------



SNOW STUDY KIT

Durable fabric carrying case with a variety of pockets and slots for our snow study tools.

Includes:	Slope Meter
	Polycarbonate Crystal Card
	Analog Thermometer
	15x Magnifying Loupe
	ECT Cord



SLOPE METER

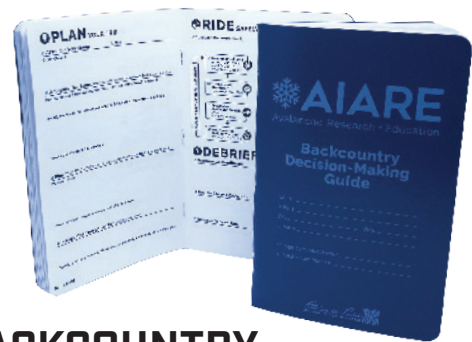
Measure the slope angle and use the compass for determining slope aspect. Angle range: 0° - 60°.



POLYCARBONATE CRYSTAL CARD

Includes metric ruler, 2 mm grid, and beveled edge. Translucent blue and graphic-free section enable improved clarity for grain type classification.

Dimensions	6" x 4" / 15 cm x 10 cm
------------	-------------------------



BACKCOUNTRY DECISION-MAKING GUIDE

This brand new version of the AIARE "blue book" has been redesigned to fit the new Pro/Rec class format in North America. Developed by the American Institute for Avalanche Research and Education (AIARE) to meet the American Avalanche Association (A3) SWAG standards. Printed on water-resistant paper.



2 METER RULER

Folding ruler for measuring snowpack depths and layers.



ANALOG THERMOMETER

Includes sling for hanging from ski tip when taking measurements. Calibratable for maximum precision.

Temperature range	-40°C to 70°C (-40°F to 158°F)
-------------------	-----------------------------------



EXTENDED COLUMN TEST CORD

A new addition to our kit, this 2 m cord has knots every 10 inches (25 cm) and two swaged aluminum teeth at the center to cut through snow and crust for extended column tests (ECT). Handles on each end provide grip while sawing.



15X MAGNIFYING LOUPE

More powerful than our previous model, with closed sides for wind protection.



BCA CLIMBING SKINS Easy on, easy off!

These 65% mohair/35% nylon “glueless” skins with Contour Hybrid construction require minimal effort to pull apart and remove from the ski—and they stay on after repeated laps in cold weather. No regluing necessary: just wipe down the adhesive layer to restore tackiness. Include flush metal tip loop and adjustable tail hook, cleaning wipes, stuff sack, and easy-to-use offset trim tool to fit these skins to your sidecut.

Color	Black
Available widths	115 mm 135mm
Available lengths	155-165 cm: (115 mm only) 165-175 cm 175-185 cm 185-195 cm



URBAN BACKPACKS

Made from leftover Float airbag pack material. Light, durable—and ideal for those unfortunate days when you’re not riding.



SHIFTY

Our basic day pack for school, conferences, festivals, and other casual events.

- Laptop/tablet sleeve fits most 15" laptops
- Stretch-woven side pockets
- Front organizational pocket
- Accessory loop

Volume	1,526 cubic inches / 25 liters
Weight	1.6 lb / 764 g
Materials	210D / 420D nylon
Color	Navy/Black



BACKY

Our rugged, highly water resistant, mid-sized urban pack.

- Laptop/tablet sleeve fits most 15" laptops
- Stretch-woven side pockets
- Two (2) exterior accessory pockets
- Accessory loops
- Compression straps
- Hydration sleeve and port
- Internal mesh accessory pocket

Volume	1,526 cubic inches / 25 liters
Weight	1.8 lb / 856 g
Materials	210D / 420D nylon
Color	Black



360 COMMUTE GRAB

Our most tricked-out urban pack for commuting to work via bus, bike, foot—or even skateboard.

- Laptop/tablet sleeve fits most 15" laptops
- Stretch-woven side pockets
- Front organizational pocket
- Accessory loops
- Compression straps
- Hydration sleeve and port

Volume	1,953 cubic inches / 32 liters
Weight	1.9 lb / 898 g
Materials	210D / 420D nylon
Color	Brick/Black

EDUCATIONAL RESOURCES

EDUCATION + GEAR = SAVED LIVES

At BCA, we see ourselves as educators just as much as manufacturers. That's why you'll see that our website is just as rich in education as in product. On our Learn pages, check out our downloadable instructional videos on the "backcountry basics" and companion rescue. While you're there, peruse our library of published research papers. Learn from our Success Stories page, where we not only feature successful airbag deployments and transceiver searches, but we celebrate everyday decision-making victories (#sendandreturn).

In our six-part "Send and Return" video series, you'll see our athletes setting an example for their peers: riding hard, but only according to the avalanche conditions. All BCA athletes are required to have level 1 avalanche training. In "Send and Return," you'll see them putting that to work by checking the avalanche forecast, performing trailhead and stability tests, and choosing terrain appropriate to the conditions. Look for these on our Videos page.

Now you can use the updated BCA app on any smartphone platform to check the avalanche bulletin, measure slope angle/aspect/elevation, and locate BCA retailers and Float cylinder refill and exchange centers. Just search for "BCA Backcountry Access" on your iPhone or Android.

When the goal is to save lives, the product is only part of the equation. Even though we've been making the most reliable and easy-to-use avalanche gear on the planet for over 25 years, we hope you never, ever have to use it—except for practice.

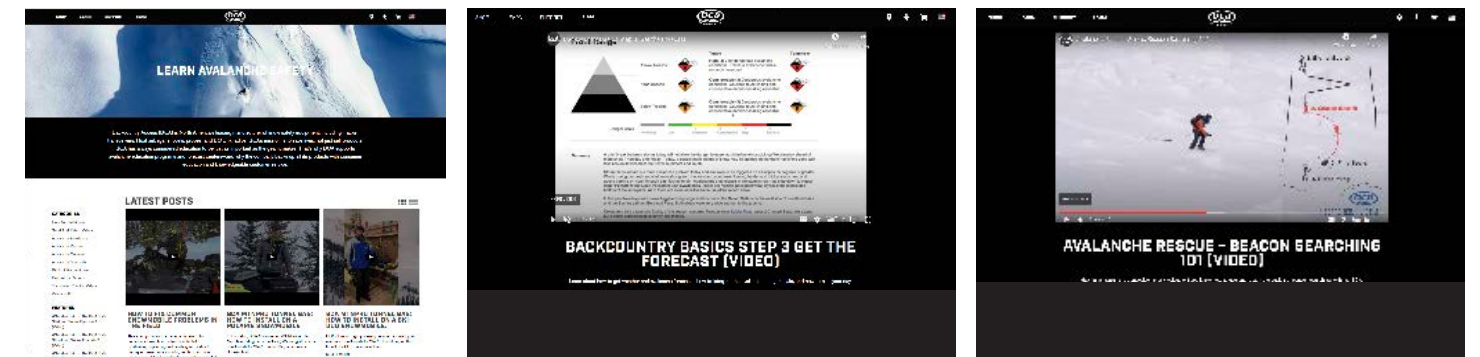
HOW-TO VIDEOS

Hands-on instructions on how to choose and how to use BCA safety products.



BACKCOUNTRY BASICS AND AVALANCHE RESCUE 101

Get the gear, get the training, and get the forecast. Learn about tour planning and human factors in the backcountry. And BCA's specialty: how to beacon search, probe, and shovel.



BLOG: BCA TODAY

Read up on the latest research, techniques, trip reports, and avalanche-related events.

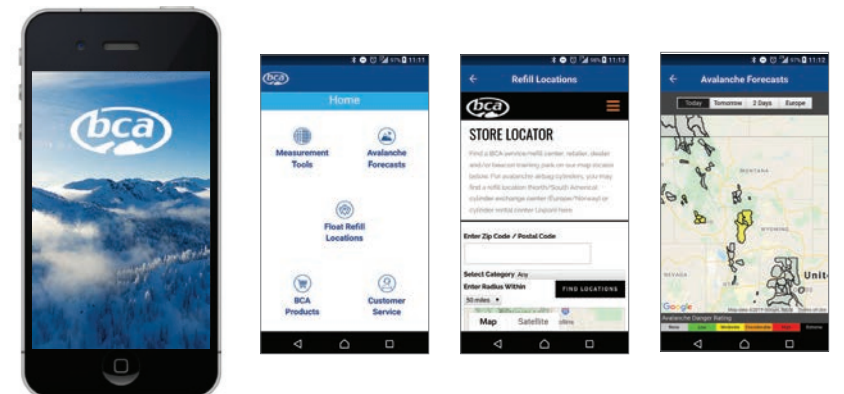
CHEST OR PANTS? WHERE TO WEAR YOUR AVALANCHE TRANSCIEVER



Last season, a skier on the Bugaboos to Roger Pass traverse took a ride in an avalanche. He pulled his airbag and was fortunately not buried, and he suffered only a minor knee injury. The skier was quite shaken up though and early the next morning he realized that his avalanche transceiver was missing...

BCA APP

Check the avy forecast, take field measurements, find local BCA retailers and Float refill and exchange centers.



PARTNERS



CONTACT US

BCA Headquarters: info@backcountryaccess.com, Tel: 303-417-1345

Europe: info@k2sports.de, Fon: +49 8856 8000

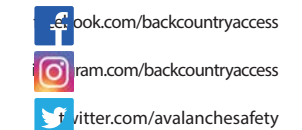
Canada: bca@k2canada.com, Tel: 416-620-4125

Norway: madshus@madshus.com, Tel: +47 61134300

Japan: bca@k2japan.com, Phone: +81 3-6858-2311

SOCIAL MEDIA

Follow us on our website, Facebook, Twitter, and Instagram for updates on BCA products, snow safety techniques and #sendandreturn reports. Stay ahead of the curve by learning from our library of videos on the BCA YouTube channel: youtube.com/BackcountryAccess.



#avalanchesafety#sendandreturn

Backcountry Access, Inc.
www.backcountryaccess.com
2820 Wilderness Place, Unit H
Boulder, Colorado 80301 USA
800-670-8735



FRONT COVER: CALVIN DAVENPORT TAKES A HOT LAP IN SUB-ZERO TEMPS, SAN JUAN MOUNTAINS, CO. PHOTO: @JEFFCRICCO
BACK COVER: KAM WEAKLEY EXITS THE HALFPIPE, SOMEWHERE NEAR SILVERTON, CO. PHOTO @JEFFCRICCO